



RIGEL ANALYST™

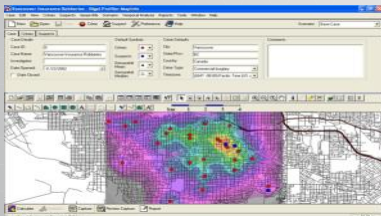
FOCUS INVESTIGATION EFFORTS

SAVE VALUABLE TIME & RESOURCES

APPREHEND SERIAL OFFENDERS FASTER

Rigel Geographic Profiling

Rigel Analyst is ECRI's professional geographic profiling system for crime analysts. Used by leading national and regional police forces worldwide, Rigel works directly with your data, your GIS software and the patented CGT algorithm to provide your agency with proven and effective geographic profiling capabilities.



Compatible & Easy to Use

Those familiar with standard Windows GIS software and office tools will feel right at home using Rigel Analyst. Rigel works directly with your crime data, suspect data and map data in common data formats, using a familiar Windows graphical user interface.

The capabilities of your GIS software are fully integrated into Rigel Analyst's map window. If you have access to multiple GIS options, Rigel Analyst allows you to use any or all of them together for enhanced capabilities. Supported GIS services include:

- ESRI ArcGIS
- Microsoft MapPoint
- Pitney Bowes MapInfo
- Google Maps

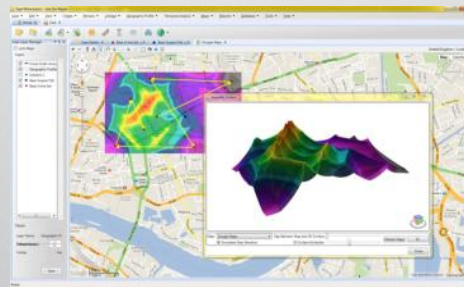
Detailed street maps and geocoding data included with GIS software packages such as MapPoint and online services such as Google Maps can be used directly by Rigel Analyst. Geographic profiles generated by Rigel can be exported to external GIS applications.

Geographic Profiling

Geographic Profiling is an investigative tool used to prioritize suspects and manage case information. It is used to focus investigations

prioritization of the large amounts of data used in a case, such as suspect lists, parolees, and registered sex offenders.

Accumulated experience shows that geographic profiling will, on average, locate the offender's home base to within 5% of the operating area. This can reduce investigation time, help prevent new offences, and save money and resources.

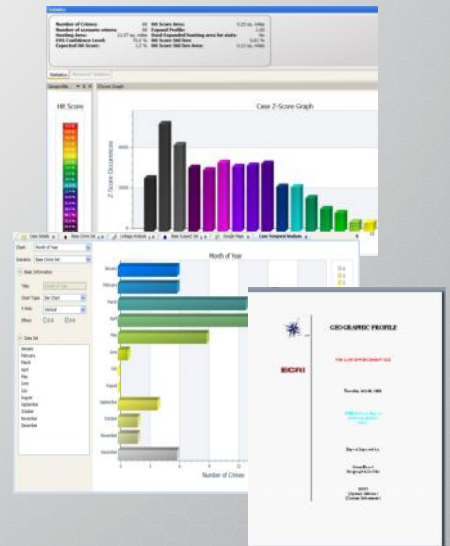


Feature Highlights

- Built-in multi-source geocoder works with existing street address information and place names.
- Direct entry of crime sites and suspect information by address or map location
- Import data from existing records management systems.
- Multiple scenarios with visual and statistical comparison.
- Expert system to optimize results.
- Multiple map windows
- Temporal analysis tools including temporal charts, temporal data filtering, crime order arrows with animation, temporal maps *NEW*
- Window template manager
- High capacity case database with automatic backups

Professional Reporting

Reporting is quick and easy through the use of standard Microsoft Word and PowerPoint templates. The report generator automatically loads crimes, suspect data, analysis results and images into professional looking reports to save time.



System Requirements

- Windows XP or later (Win7 recommended)
- GIS software or access to internet map services.
- Microsoft Office or similar tool set for editing data and reports.

License Versions

- Single-User Standalone
- Multi-User Network

Environmental Criminology Research Inc.

262-1857 West 4th Ave., Vancouver, B.C., Canada V6J 1M4

Phone: 604.718.2060 Email: info@ecricanada.com

